

# LAND CLASSIFICATION AND CAPABILITY IN ERBIL GOVERNORATE

Class /Limitation	Sum of Area (hectare)	Sum of Area (donum)
2/t	130,489	521,955
21/t	3,760	15,040
24/g	116,594	466,375
25/e	8,615	34,458
3/t	35,730	142,922
3/te	26,977	107,906
34/g	61,535	246,139
34/t	36,858	147,433
35/te	5	20
36/e	29,089	116,355
4/te	48,338	193,353
43/g	44,574	178,295
5/g	29,602	118,406
57/e	247,452	989,807
57/el	83,575	334,299
6/e	61,632	246,528
6/el	292,610	1,170,439
7/e	759	3,035
7/el	218,604	874,415
8/c	31,613	126,451
<b>Grand Total</b>	<b>1,508,409</b>	<b>6,033,631</b>

## LAND CLASSES AND ASSOCIATIONS

2	Class (2)
23	Class (2) and (3)
24	Class (2) and (4)
25	Class (2) and (5)
3	Class (3)
32	Class (3) and (2)
34	Class (3) and (4)
35	Class (3) and (5)
43	Class (4) and (3)
56	Class (5) and (6)
64	Class (6) and (4)

## Legend:

- Center of Governorates
- ▲ Center of Erbil Sub-District
- Existing Lakes
- Watercourses
- Erbil Boundary
- Erbil Districts
- Erbil Sub-Districts
- National Boundary

Class/Limitation	4/te
2/t	43/g
21/t	5/g
24/g	57/e
25/e	57/el
3/t	6/e
3/te	6/el
34/g	7/e
34/t	7/el
35/te	8/c
36/e	

## LAND CAPABILITY CLASSES

### LAND SUITED FOR CULTIVATION

- Class 1 Very good cultivable land
- Class 2 Good cultivable land with minor limitation in use
- Class 3 Moderately good cultivable land with major limitation in use
- Class 4 Land suited only for limited or occasional cultivation

### LAND UNSUITED FOR CULTIVATION

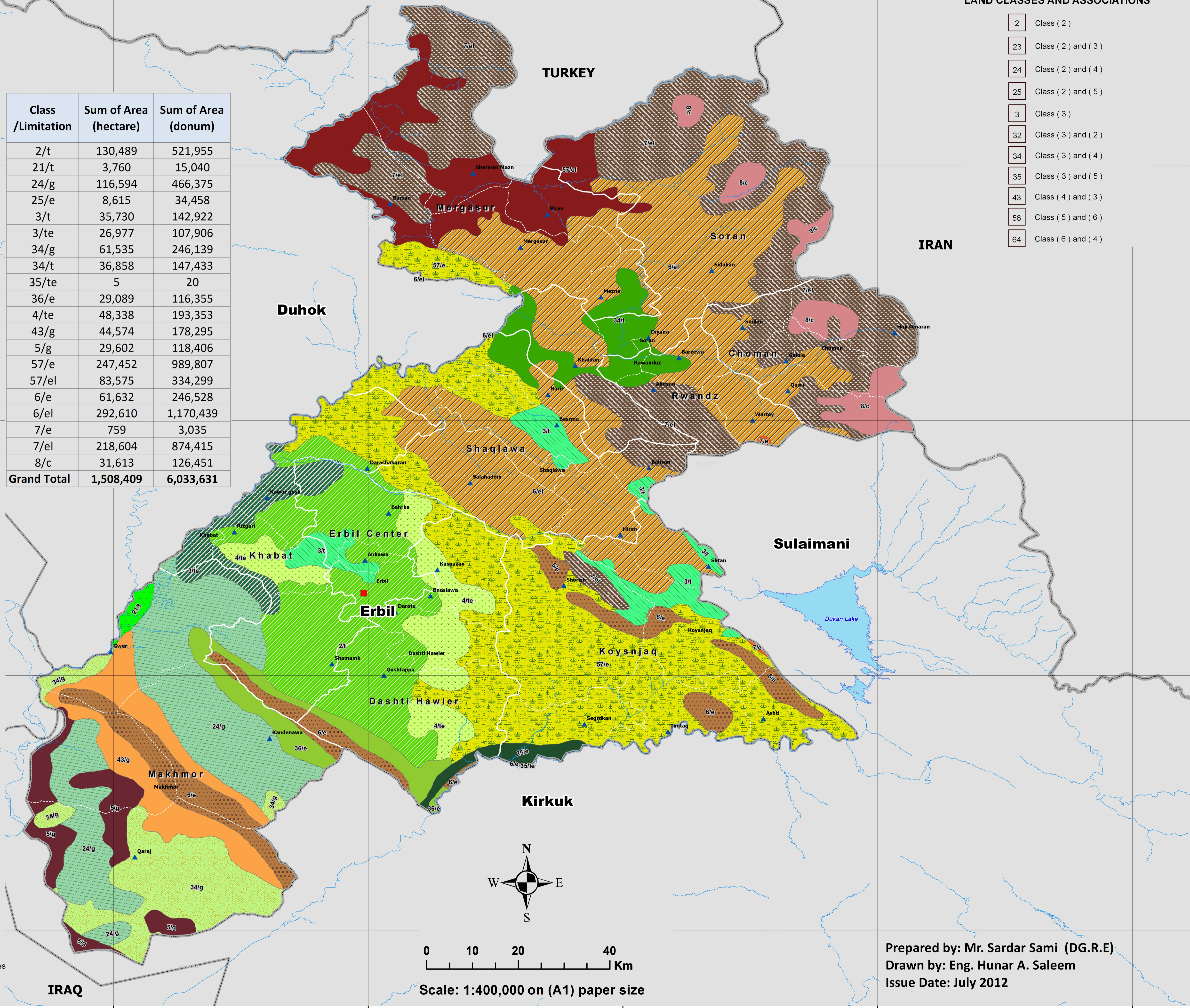
- Class 5 Very well suited for grazing or forestry
- Class 6 Well suited for grazing or forestry with minor limitation in use
- Class 7 Fairly well suited for grazing or forestry with major limitation in use

### LAND UNSUITED FOR CULTIVATION GRAZING OR FORESTRY

- Class 8 May be suited only for recreations, wild life for watershed management

## LAND LIMITATIONS

- I Land limited in use due to steep slope
- e Land limited in use due to water or wind erosion
- w Land limited in use due to wetness
- s Land limited in use due to salinity
- c Land limited in use due to low temperature or snow cover
- d Land limited in use due to low rainfall
- t Land limited in use due to soil texture
- g Land limited in use due to high gypsum content
- k Land limited in use due to shifting sand or pseudo-sand dunes
- R Land limited in use due to rock outcrops or high content of stones



0 10 20 40 Km

Scale: 1:400,000 on (A1) paper size

Prepared by: Mr. Sardar Sami (DG.R.E)  
 Drawn by: Eng. Hunar A. Saleem  
 Issue Date: July 2012